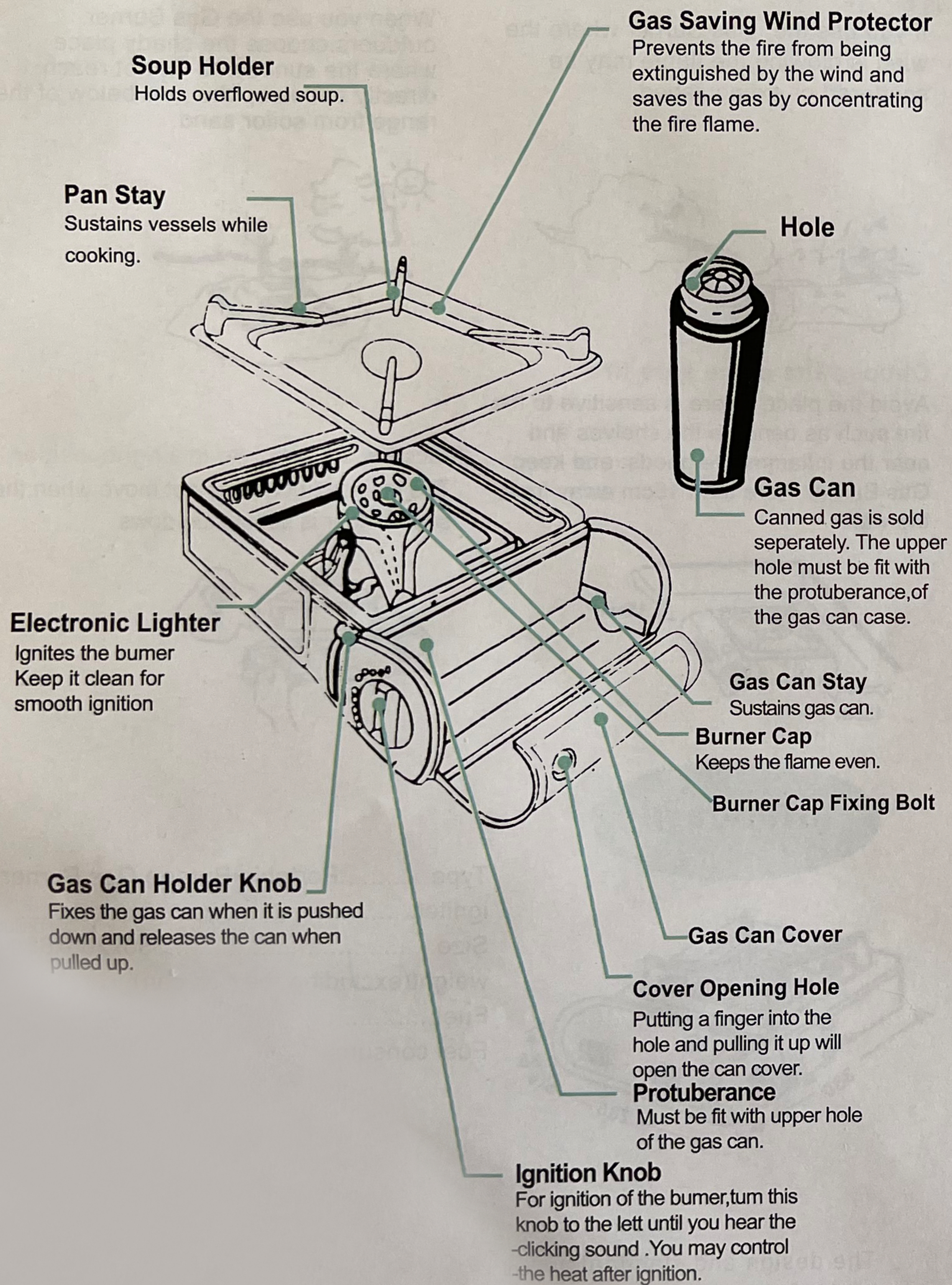


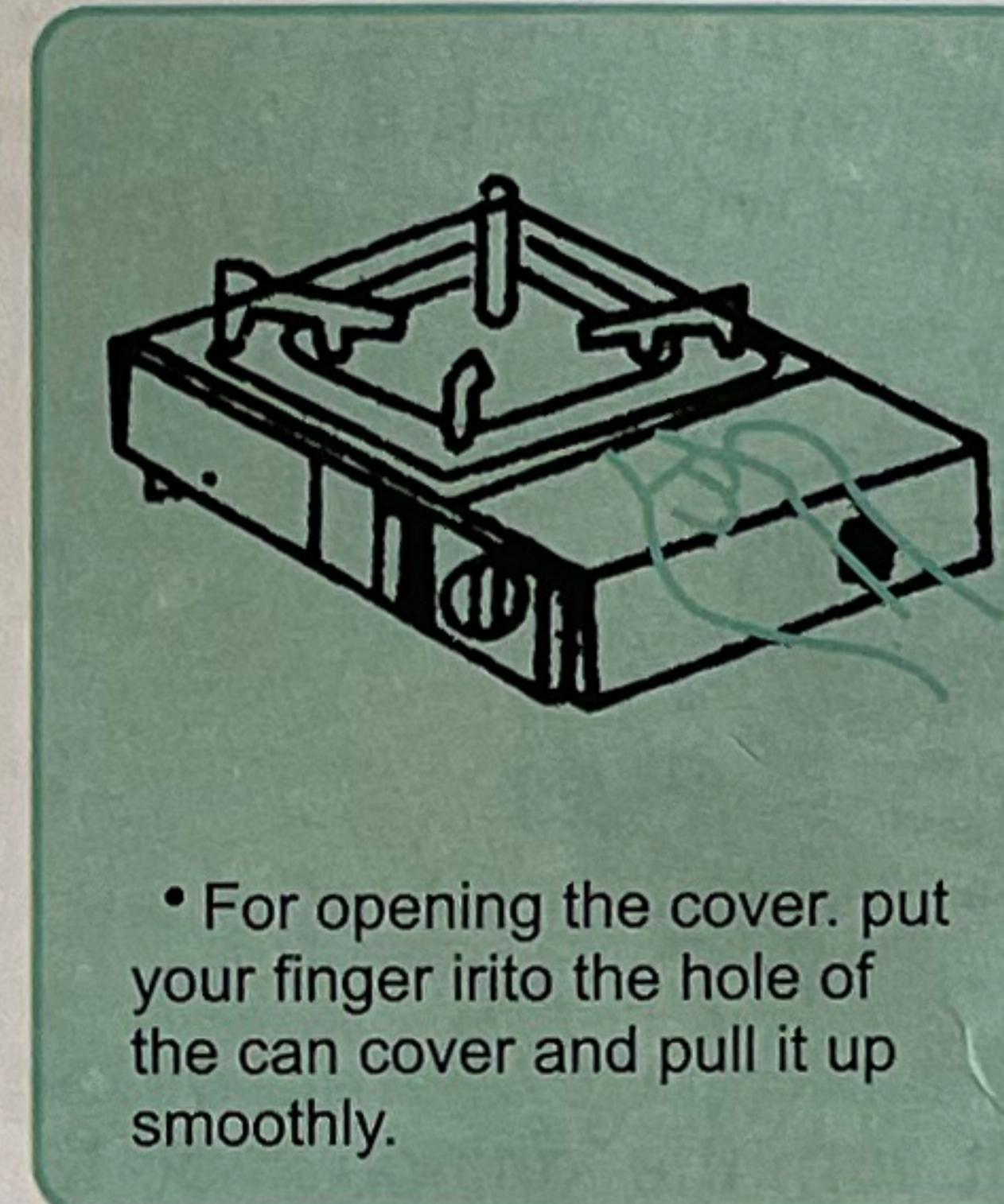
Name and Function of Each part



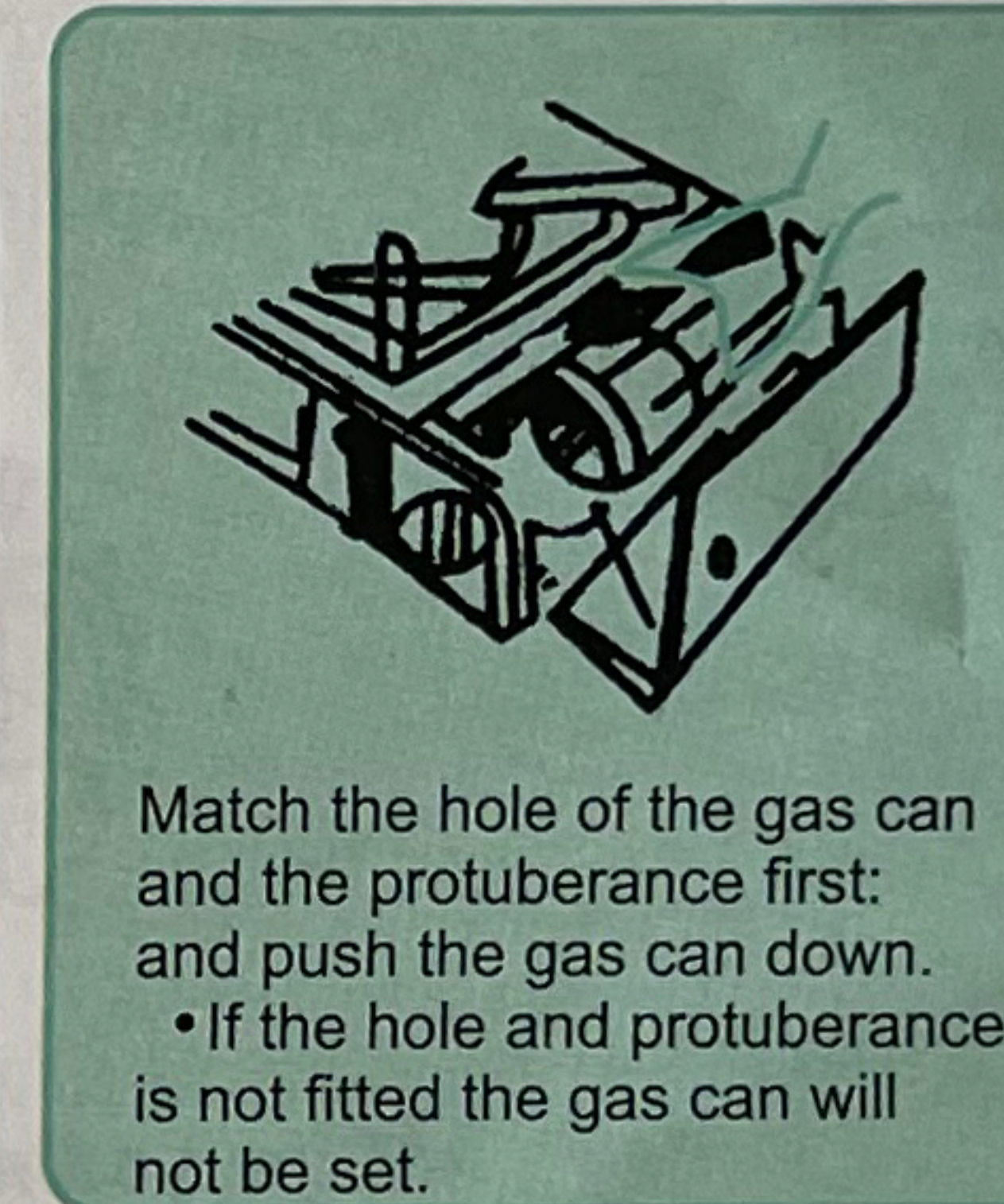
Right Usage

Install the Butane Gas Burner in the safe and operate it as follows

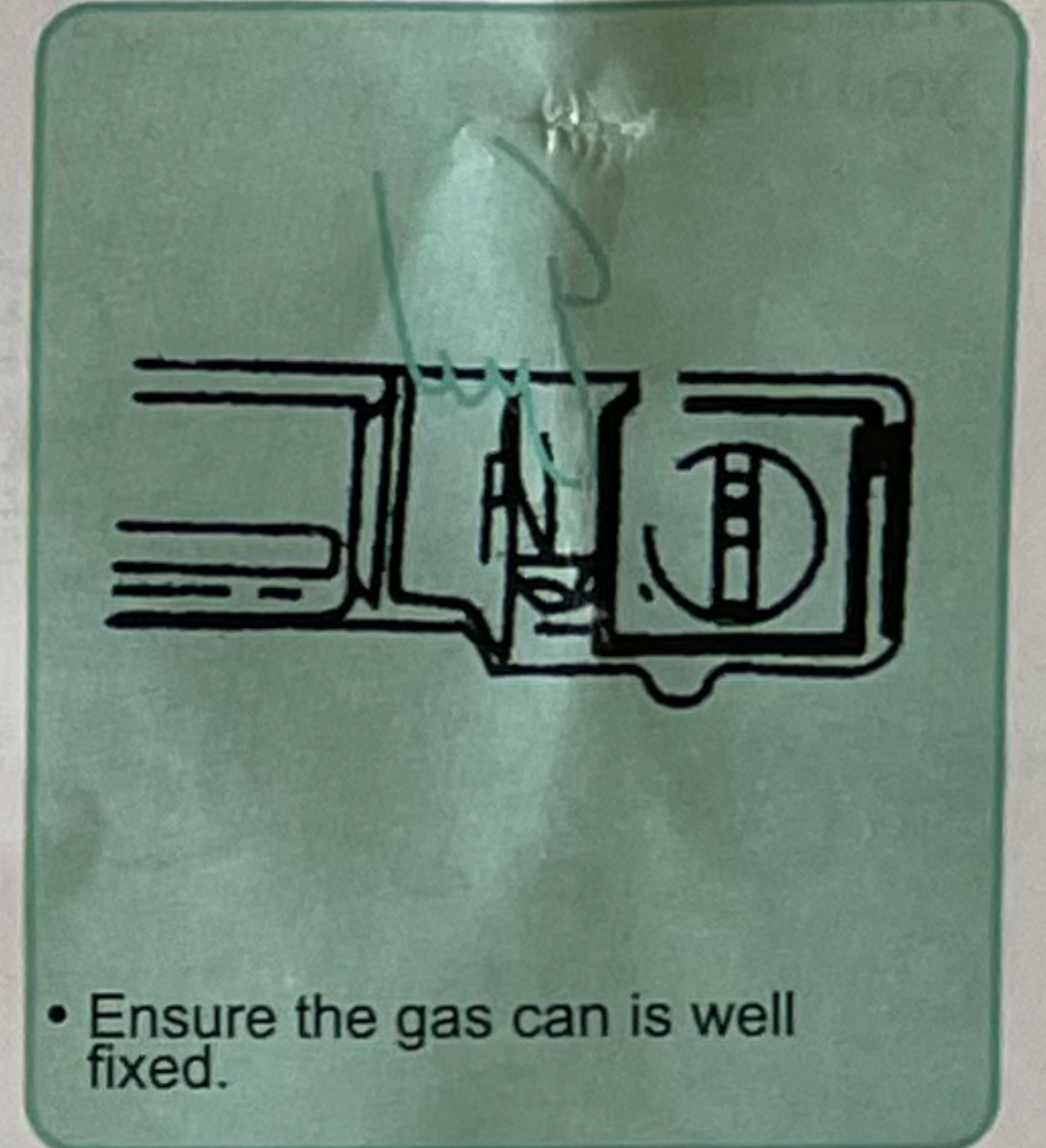
1 Install the soup holder right and open the gas can cover



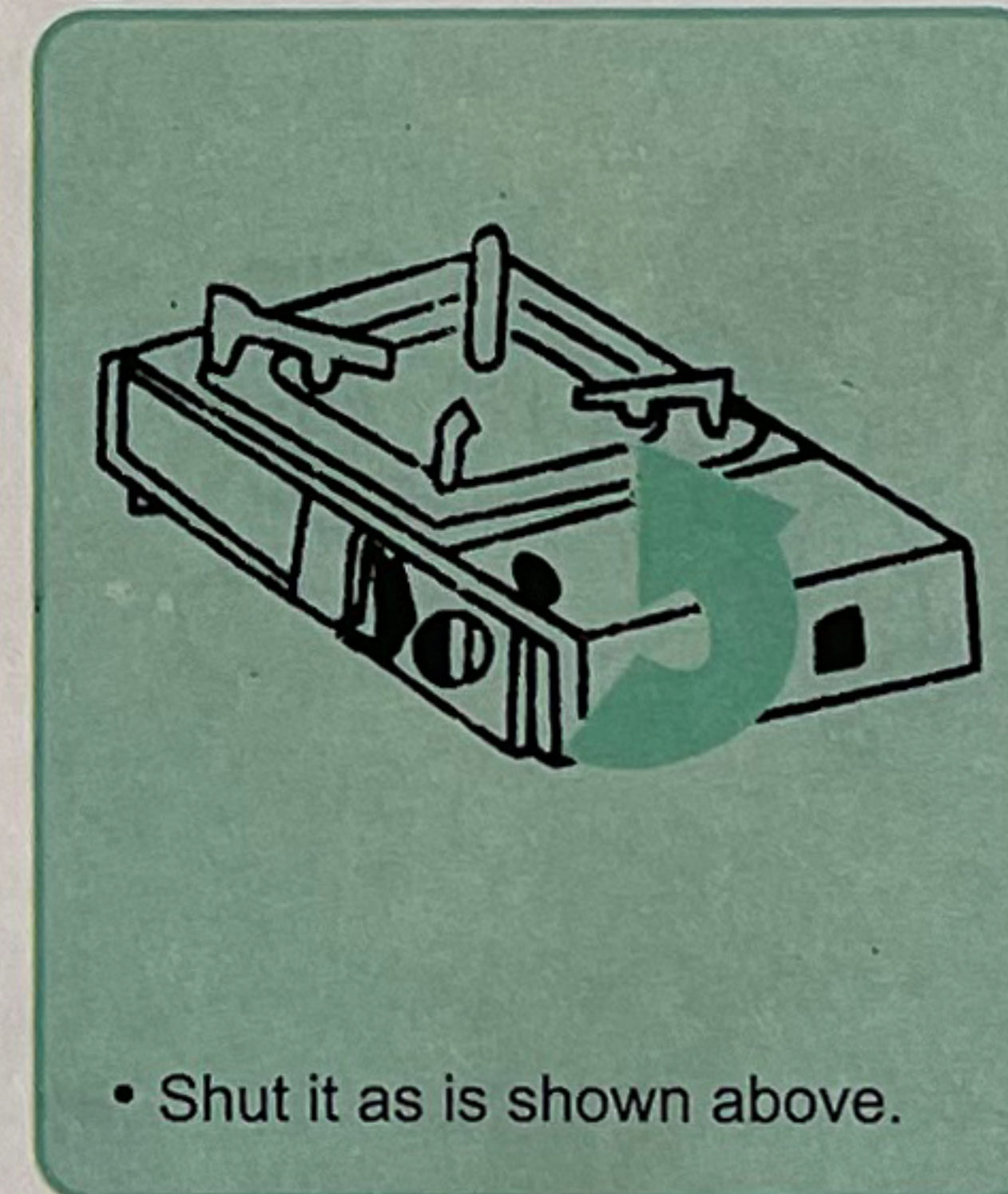
2 Put the gas can in the gas can stay.



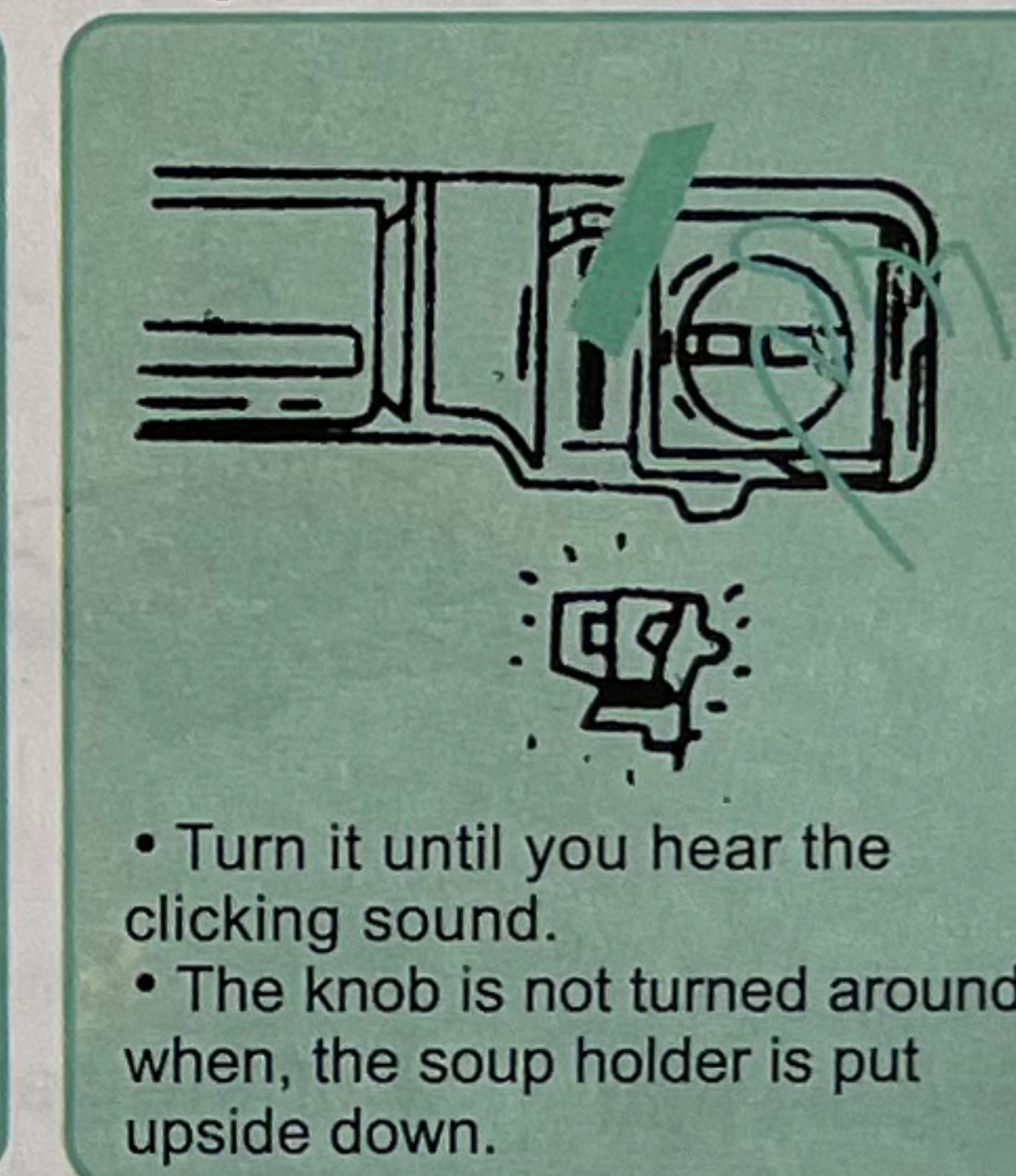
3 Push the gas can holder knob down.



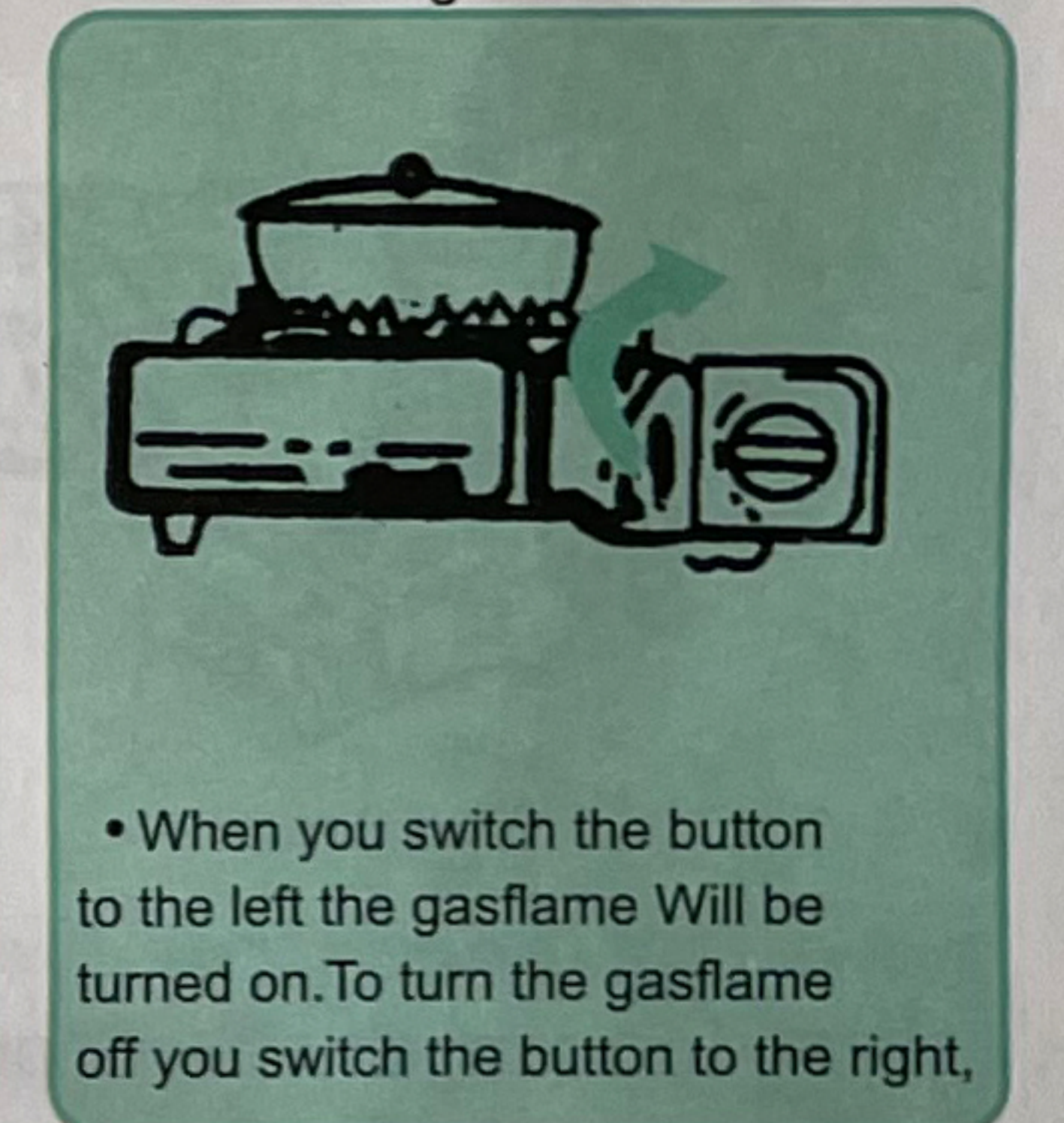
4 Shut the gas can cover.



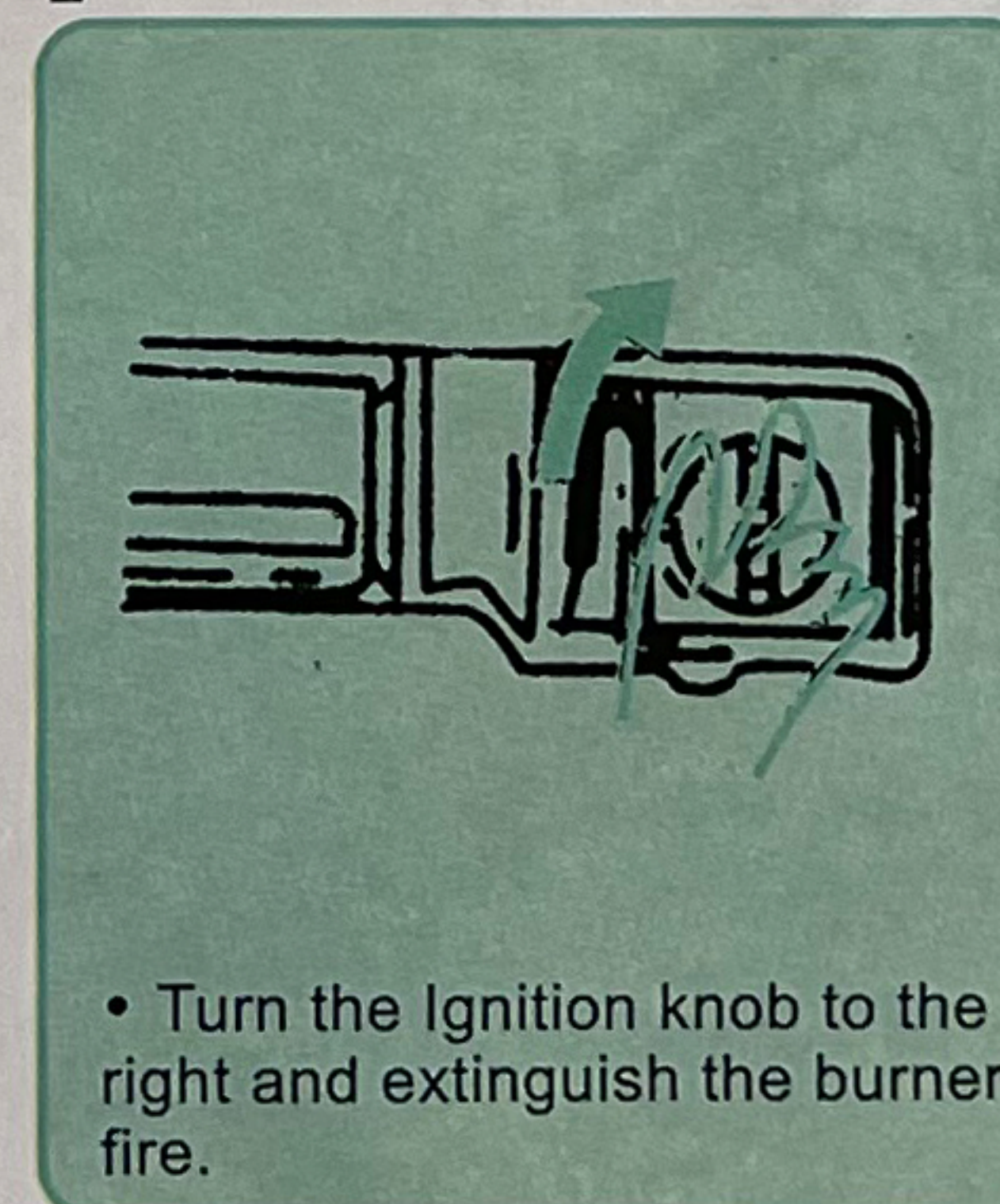
5 Ignite the burner by turning the ignition knob to the left.



6 Put the cooking vessel upon the pan stay and adjust the flame with the ignition knob.



7 When the cooking is finished extinguish the fire.



8 Pull up the gas can holder knob.

